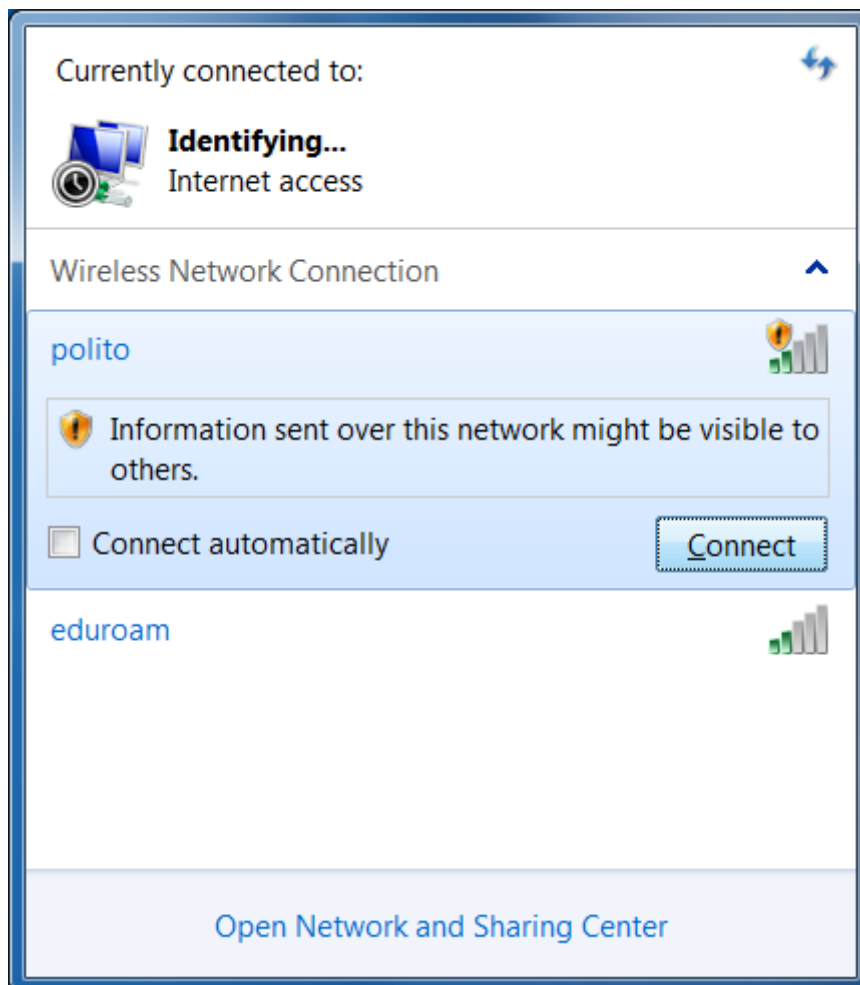




Windows 7

How to connect to "polito" WiFi network

1. Click on  (wireless network icon) from left bottom taskbar.



2. Select "polito" Network and then click "Connect".
3. Once connection established, open an internet browser and surf for any website (*).

 **POLITECNICO
DI TORINO** **WIRELESS NETWORK**

Welcome to Politecnico di Torino
Students, Academic Staff, Personnel access

Username 

Password

Logging in as a registered user indicates you have read and accepted the [terms and conditions](#)

LOGIN

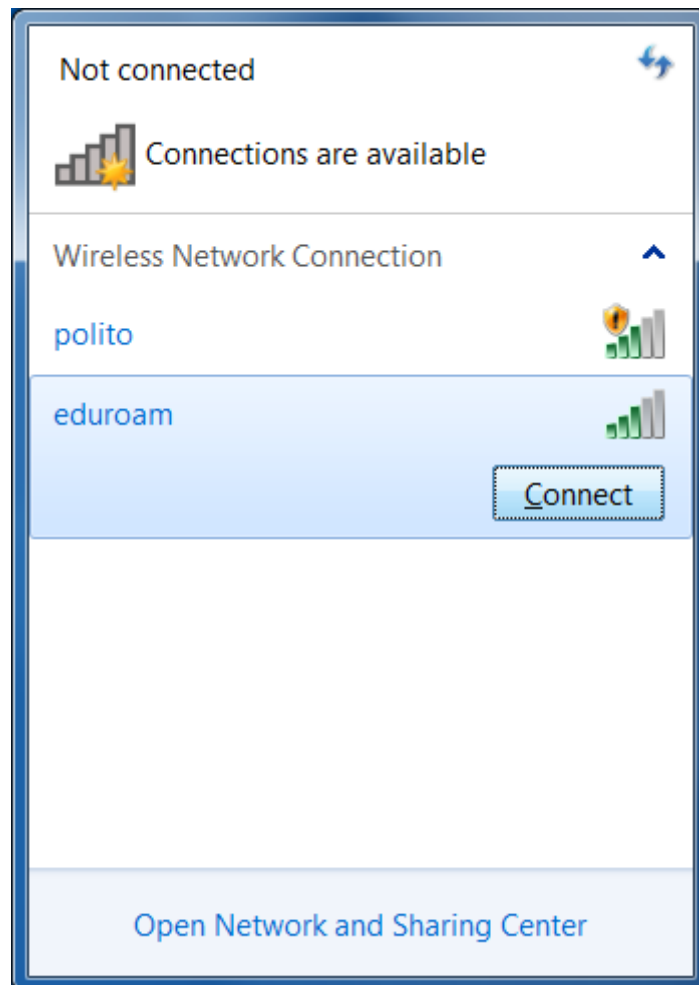
For further information please visit our [HELP](#) pages, for assistance [CONTACT US](#)

4. On the opened form page, enter your username and password according to Polito wifi **access policy**.
5. Click on "LOGIN" to complete the authentication procedure.

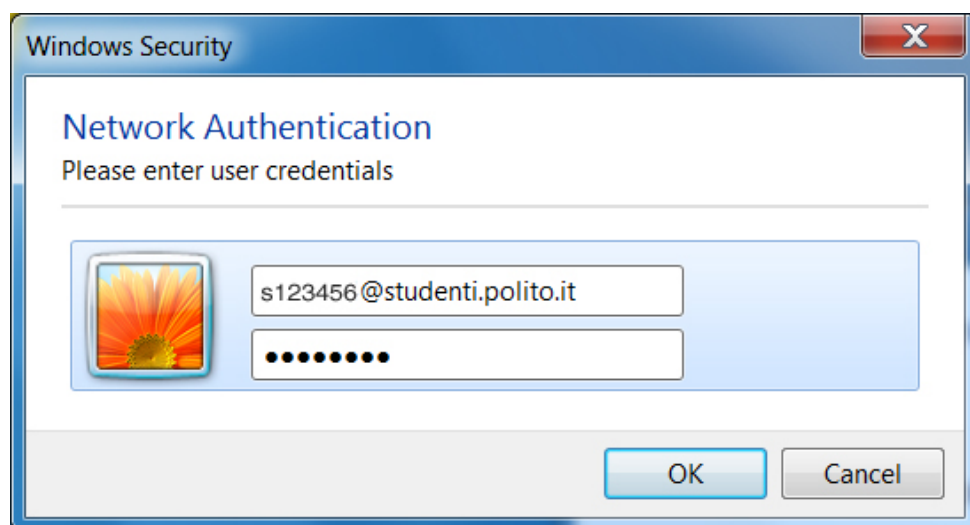
(*) - To use Politecnico di Torino WiFi, you need to complete the authentication procedure.

How to connect to "eduroam" WiFi network

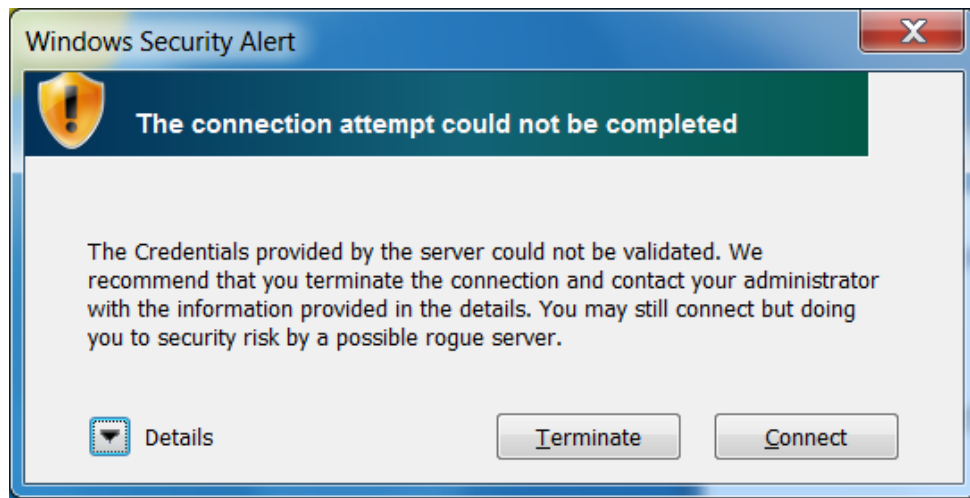
1. Click on  (wireless network icon) from left bottom taskbar.



2. Select "eduroam" Network and then click "Connect".
3. Once connection established, enter your username and password according to Eduroam wifi **access policy**.
Note that your username is the same as "Portale della didattica" account..



4. Click on "OK".



5. If an alert related to server certificate pops up, click on "Connect".

For further info 5050@polito.it