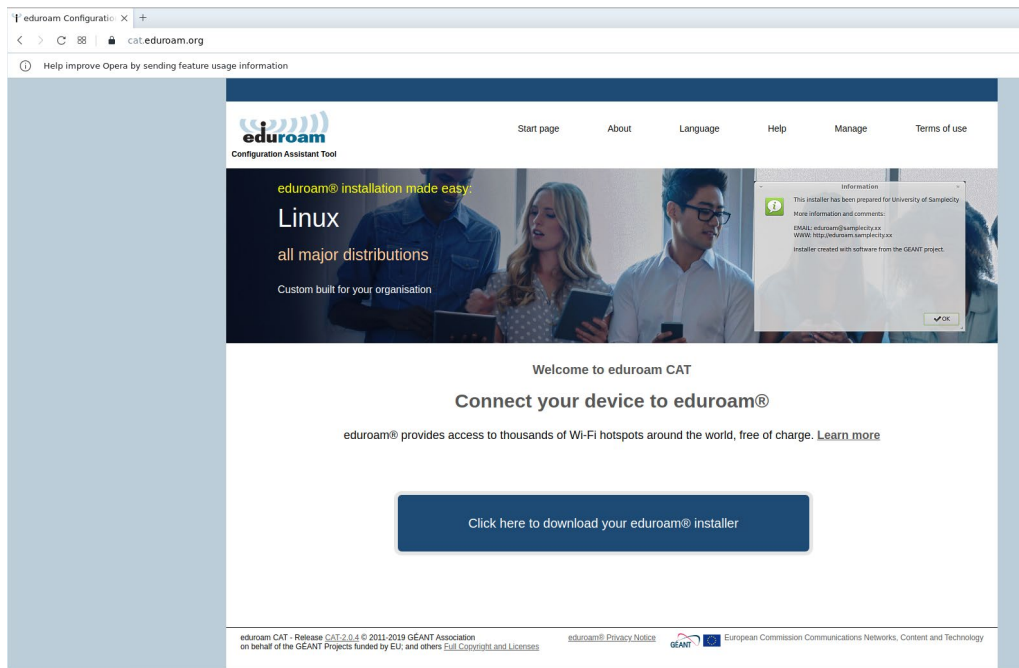


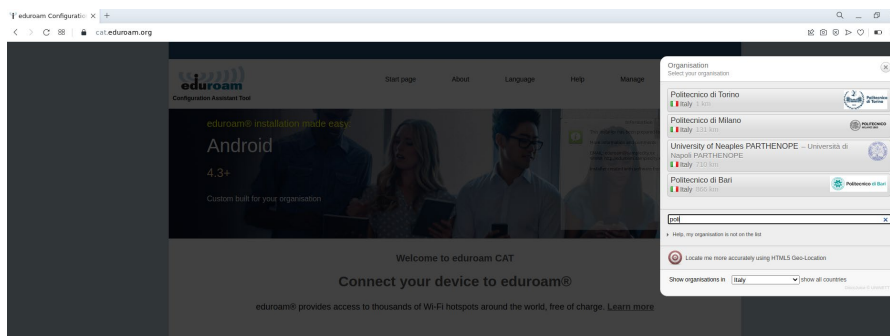


How to connect to "polito" & "eduroam" Wifi network

1. Connect to <https://cat.eduroam.org/> URL and click on "download eduroam installer" button.

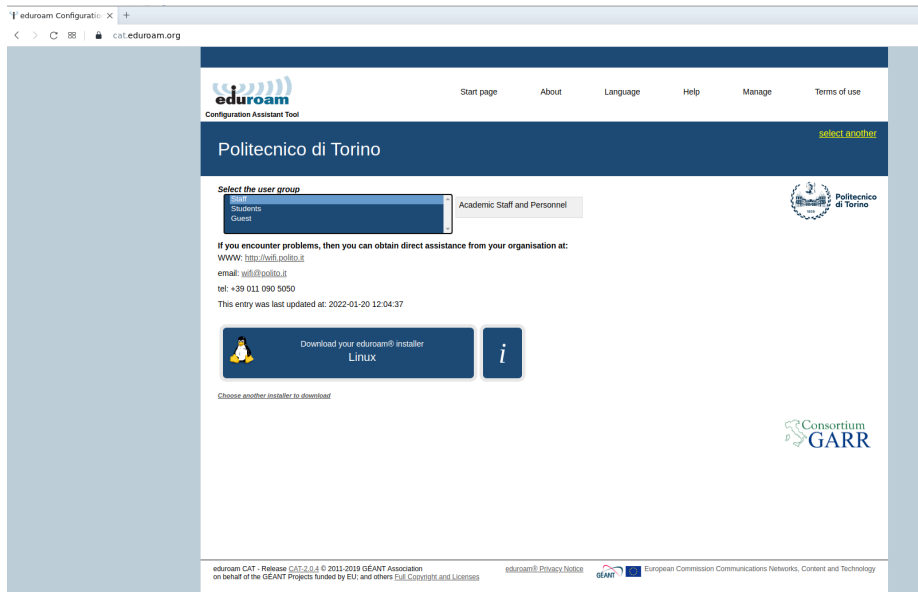


2. Select "Politecnico di Torino" from the list.

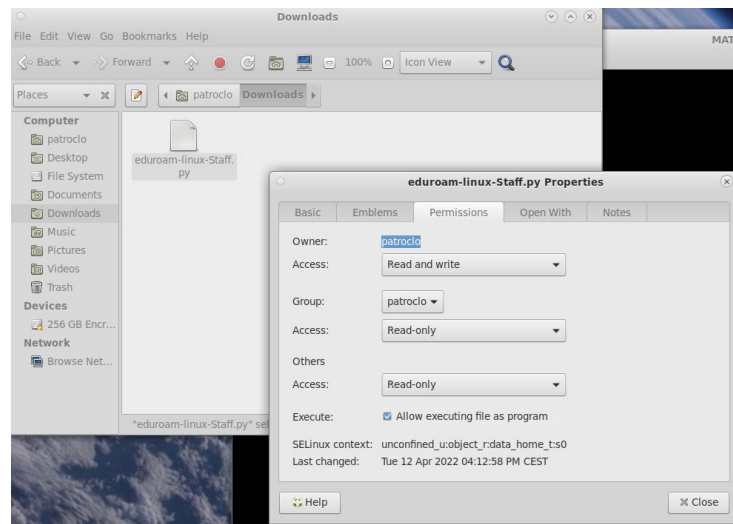




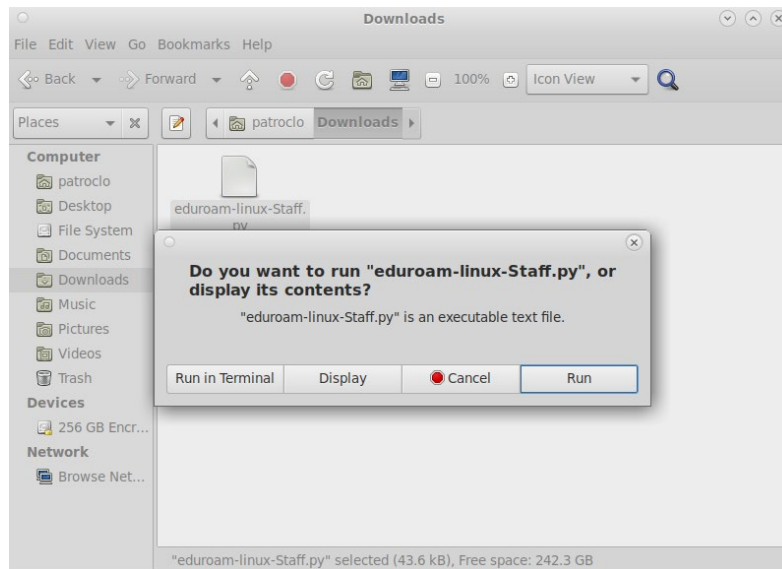
3. Select your user profile and then "download".



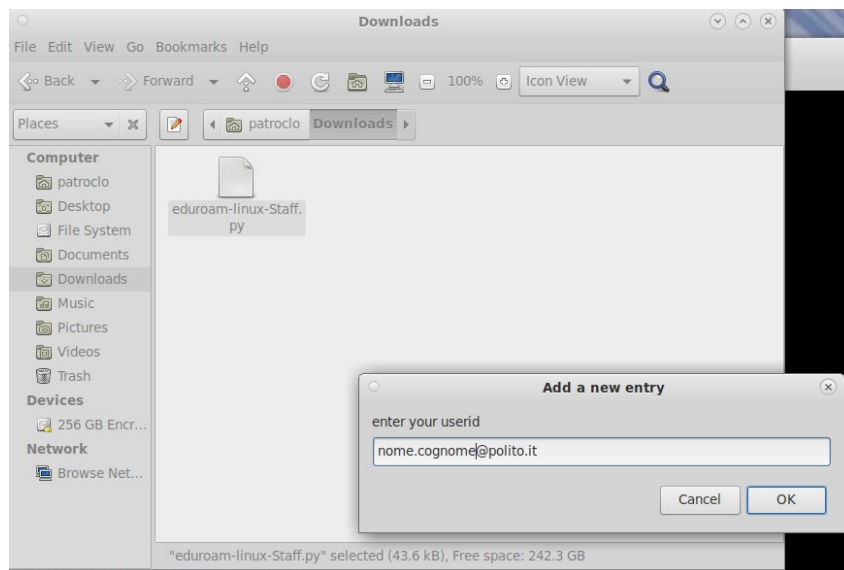
4. You will find the in download dir. Before running it, check that the "allow executing file as program" option is enabled.



5. Click on "Run".

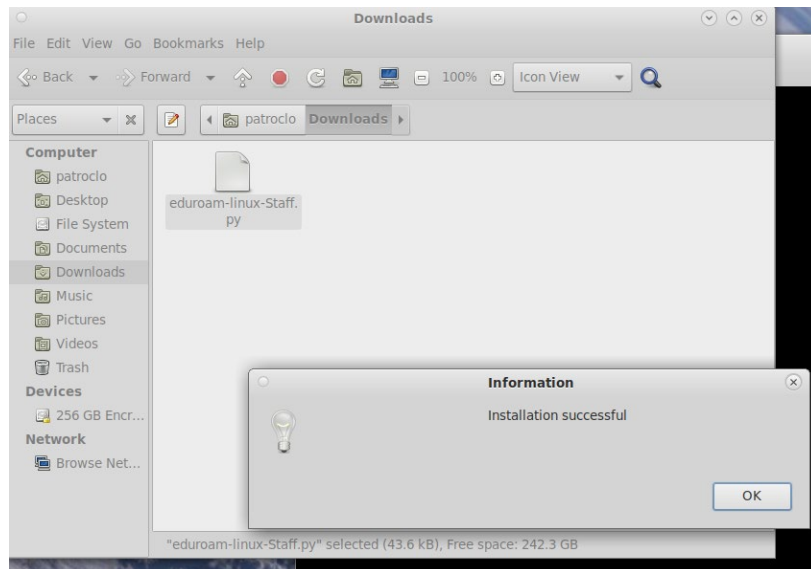


6. You must continue by answering "OK" until the request for a username and password according to [wifi access policy](#).

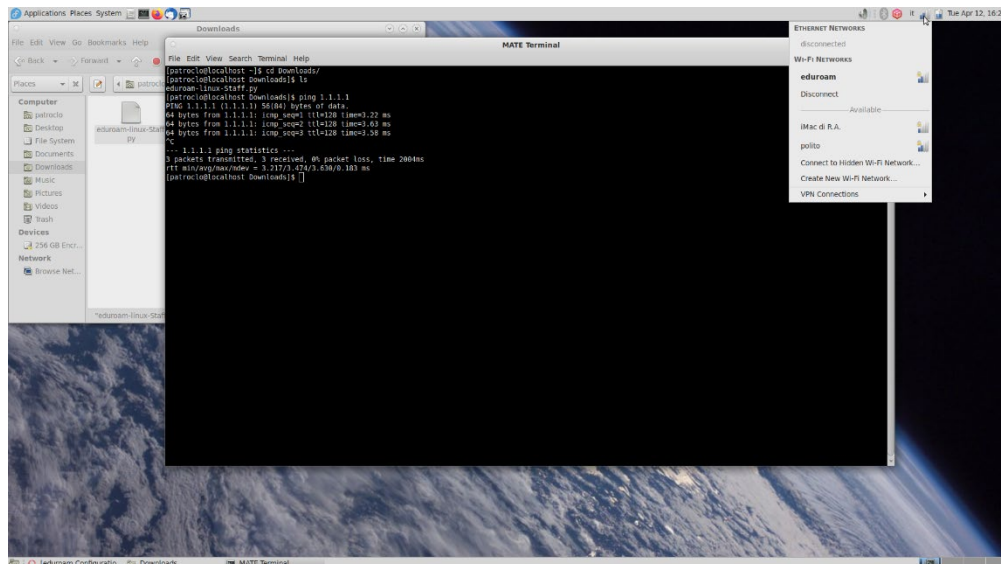




7. Installation successful.



8. Check for eduroam and polito among the available wifi networks.





9. WARNING! your device must automatically acquire DNS (Domain Name System) information; please remove any custom configuration.

Editing DHCP

Connection name: DHCP

General | Ethernet | 802.1X Security | DCB | Proxy | IPv4 Settings | IPv6 Settings

Method: Automatic (DHCP)

Additional static addresses

Address	Netmask	Gateway	
			Add
			Delete

Additional DNS servers: _____

Additional search domains: _____

DHCP client ID: _____

Require IPv4 addressing for this connection to complete

Routes...

Cancel | Save

