



Scope: VPN IPSec client configuration for Windows

Date: 25/01/2016

Translation date: 09/04/2021

Version: 1.1

Table of contents

1. INTRODUCTION.....	2
2. VPN CLIENT INSTALLATION.....	2
3. FIRST START AND VPN CLIENT CONFIGURATION.....	7
4. VPN TUNNEL ACTIVATION.....	9
5. AUTHENTICATION CREDENTIALS.....	12



1. INTRODUCTION

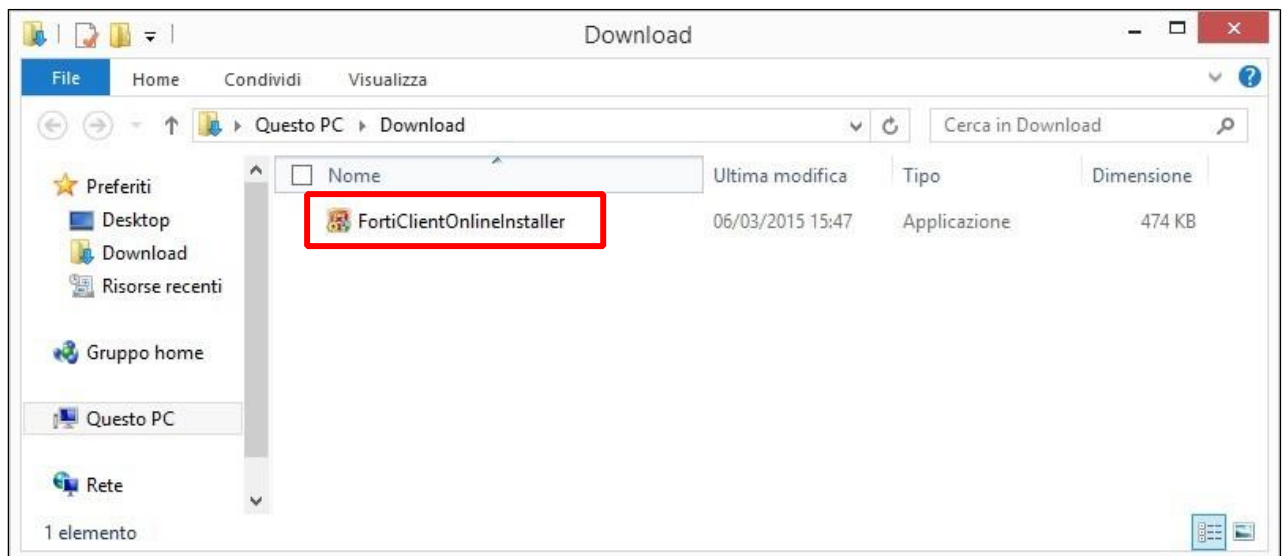
The scope of this document is to describe how to access the local network resources and hosts of Politecnico di Torino by means of the virtual private network (VPN) service.

The VPN allows to the enabled Politecnico di Torino users to establish a secure connection from whatever country (through the Internet) towards the internal University network. By this way, the user can access the internal computing (and in general IT) resources as if he was connected to the internal Politecnico di Torino network. This tool allows to protect all the data traffic traveling towards the Politecnico network without controlling the remaining Internet traffic, allowing a secured use of the Politecnico resources without affecting the Internet connection. Moreover, the VPN allows to establish secured connections from the Politecnico wireless network, enabling the access to network shared areas, printers and other resources.

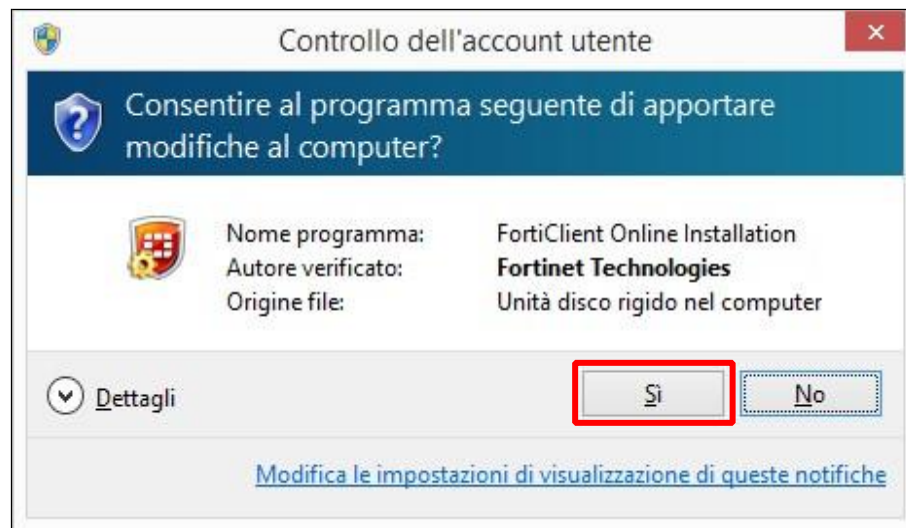
2. VPN CLIENT INSTALLATION

An updated version of the client can be download from the Fortigate® website <http://www.forticlient.com/>. In the following the installation of the software is presented on the **Windows 8.1** operating system. The procedure is analogue for **Windows 10 users**.

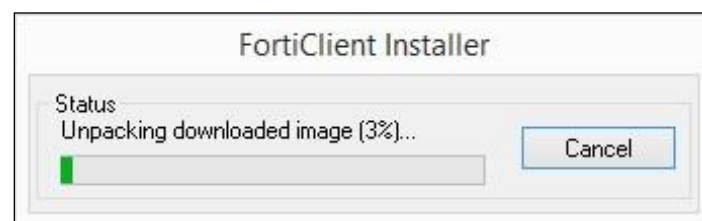
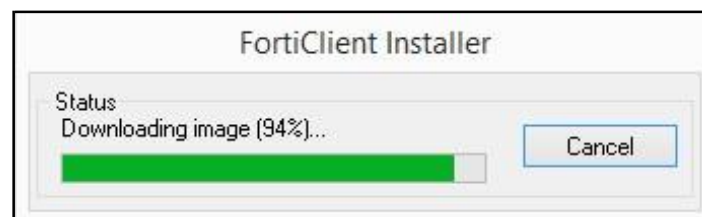
1. Launch the executable “FortiClientOnlineInstaller.exe”. Alternatively, use the available executable (e.g., “FortiClientVPNSetup_6.2.6.0951_x64.exe”).



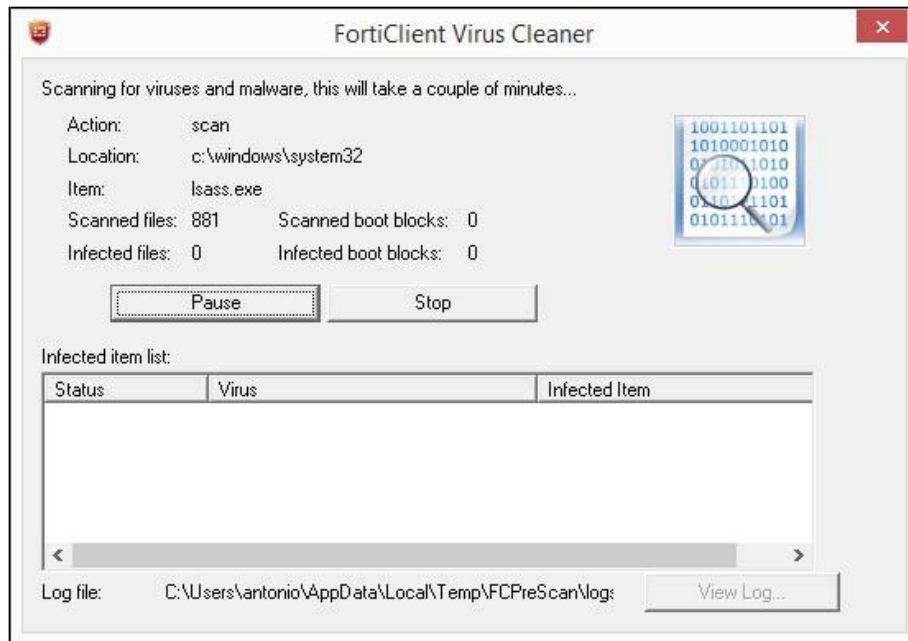
2. In case the user account control is enabled, select “Yes” to proceed with the installation.



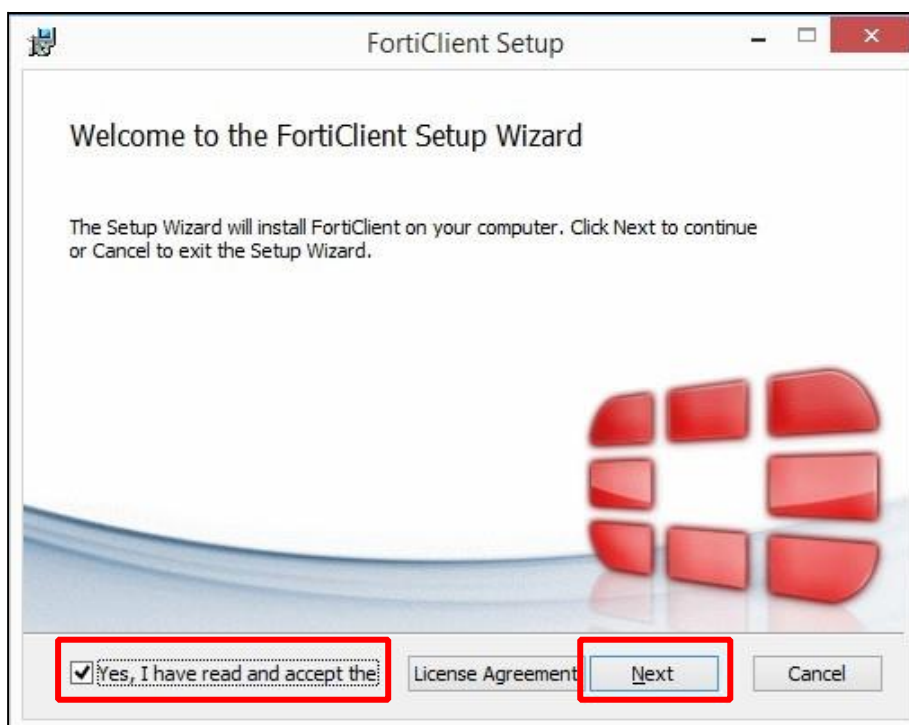
3. Wait for the installer to complete possible downloading and unpacking procedures.



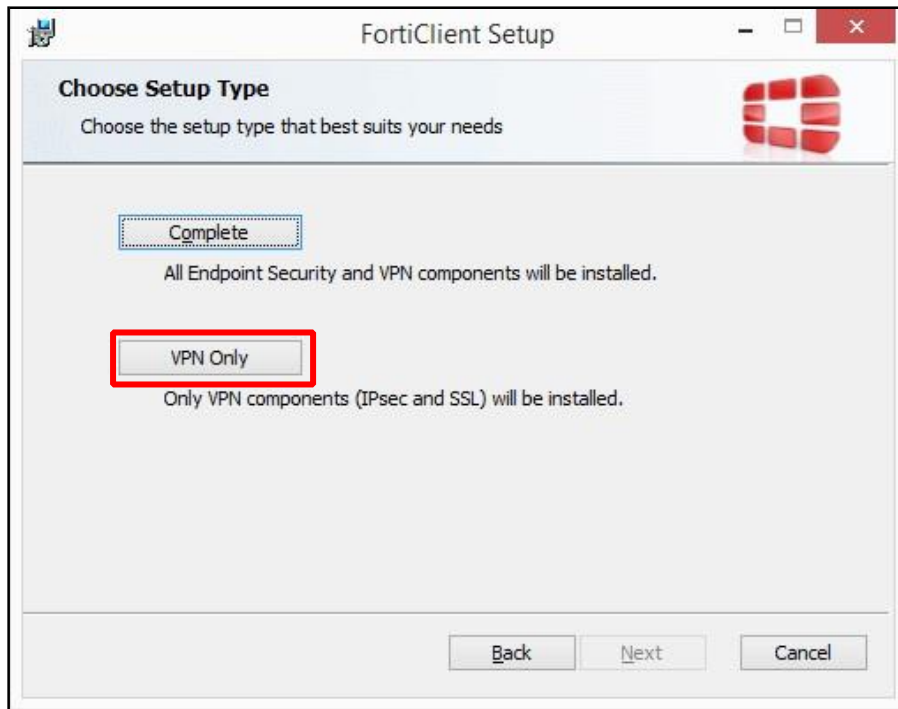
4. The client may perform a preliminary virus scan.



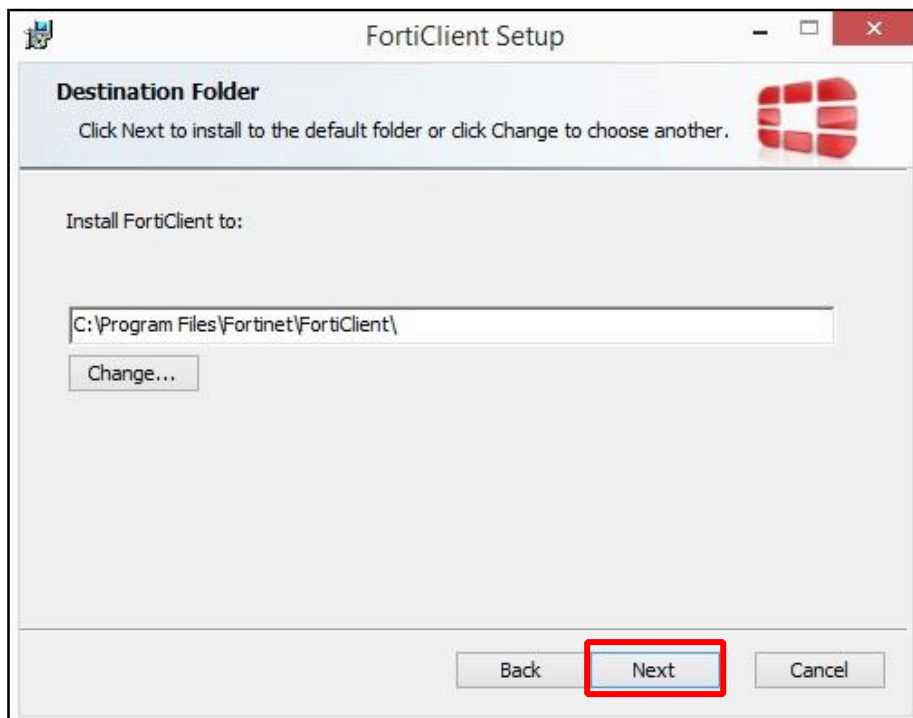
5. Accept the License Agreement and choose "Next" to proceed with the installation.



6. If asked, select “VPN Only” to proceed with the installation.



7. Choose “Next” to select the default installation folder.



Area Information Technology

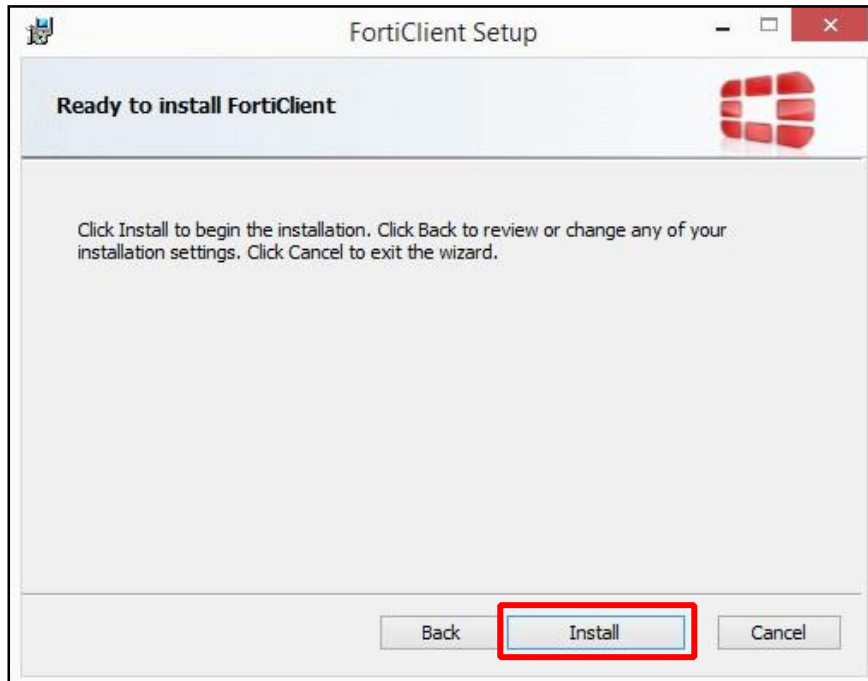
Servizio Infrastrutture - Ufficio Reti e Data Center

Politecnico di Torino Corso Duca degli Abruzzi, 24 – 10129 Torino – Italia

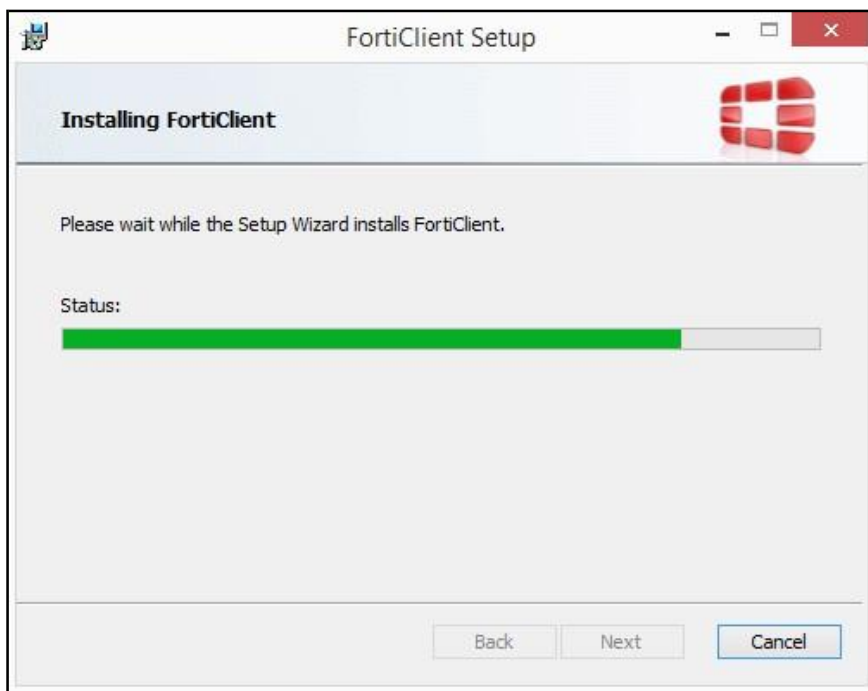
tel: +39 011.090.6692 fax: +39 011.090.6625

Infrastrutture.areaIT@polito.it www.AreaIT.polito.it

8. Start the installation clicking on "Install".



9. Wait until the installation is complete.



Area Information Technology

Servizio Infrastrutture - Ufficio Reti e Data Center

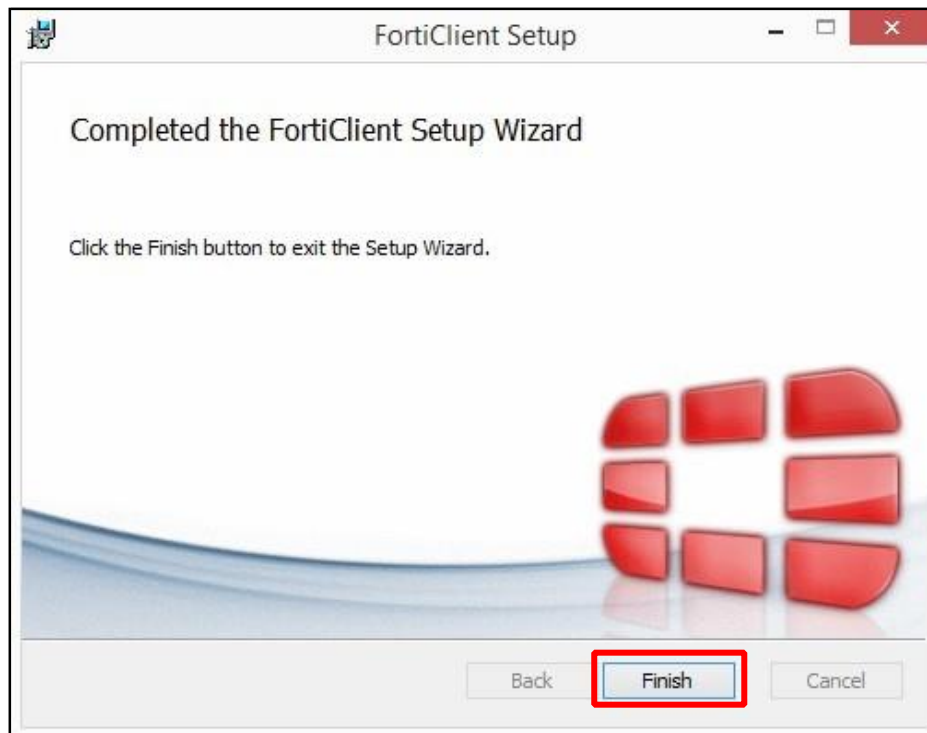
Politecnico di Torino Corso Duca degli Abruzzi, 24 – 10129 Torino – Italia

tel: +39 011.090.6692 fax: +39 011.090.6625

Infrastrutture.areaIT@polito.it www.AreaIT.polito.it



10. If the installation is successful, the following message is presented. The installation can be completed by clicking on "Finish".



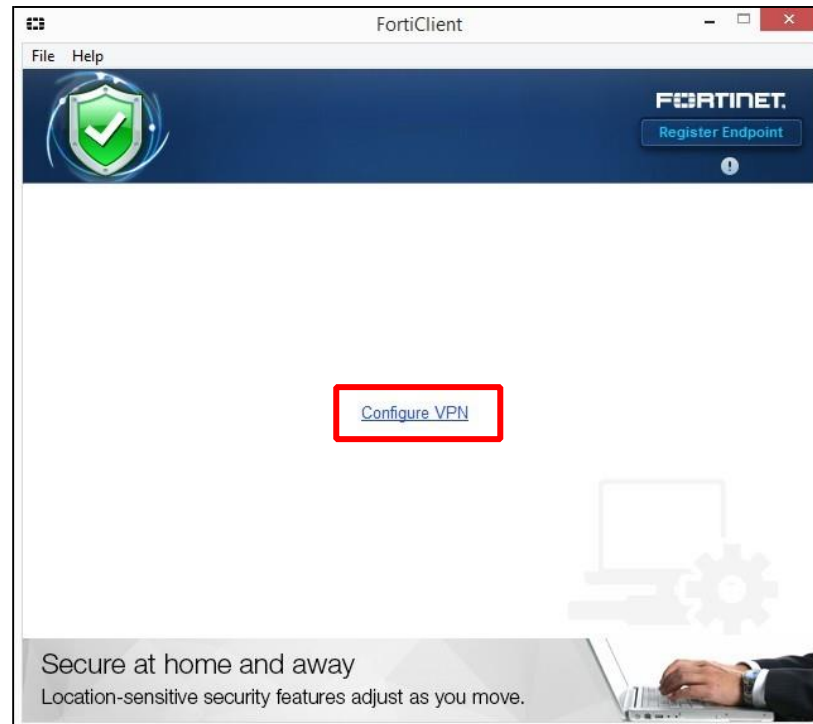
3. FIRST START AND VPN CLIENT CONFIGURATION

1. Start the client using the desktop icon

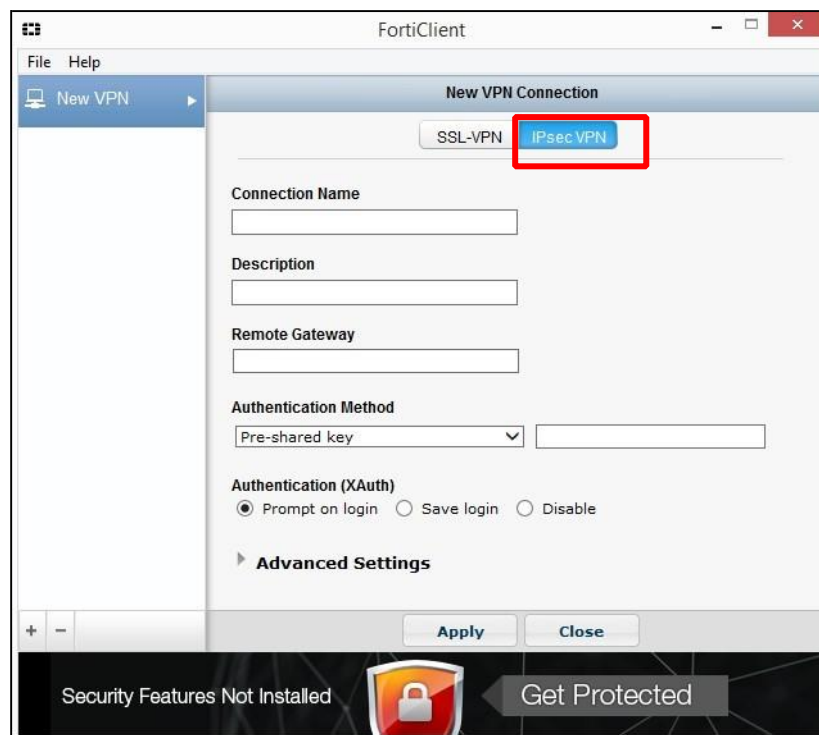




2. At the first start, the VPN client shows the following message. Select “Configure VPN”...



3. ...then, select “IPsec VPN”.



Area Information Technology

Servizio Infrastrutture - Ufficio Reti e Data Center

Politecnico di Torino Corso Duca degli Abruzzi, 24 – 10129 Torino – Italia

tel: +39 011.090.6692 fax: +39 011.090.6625

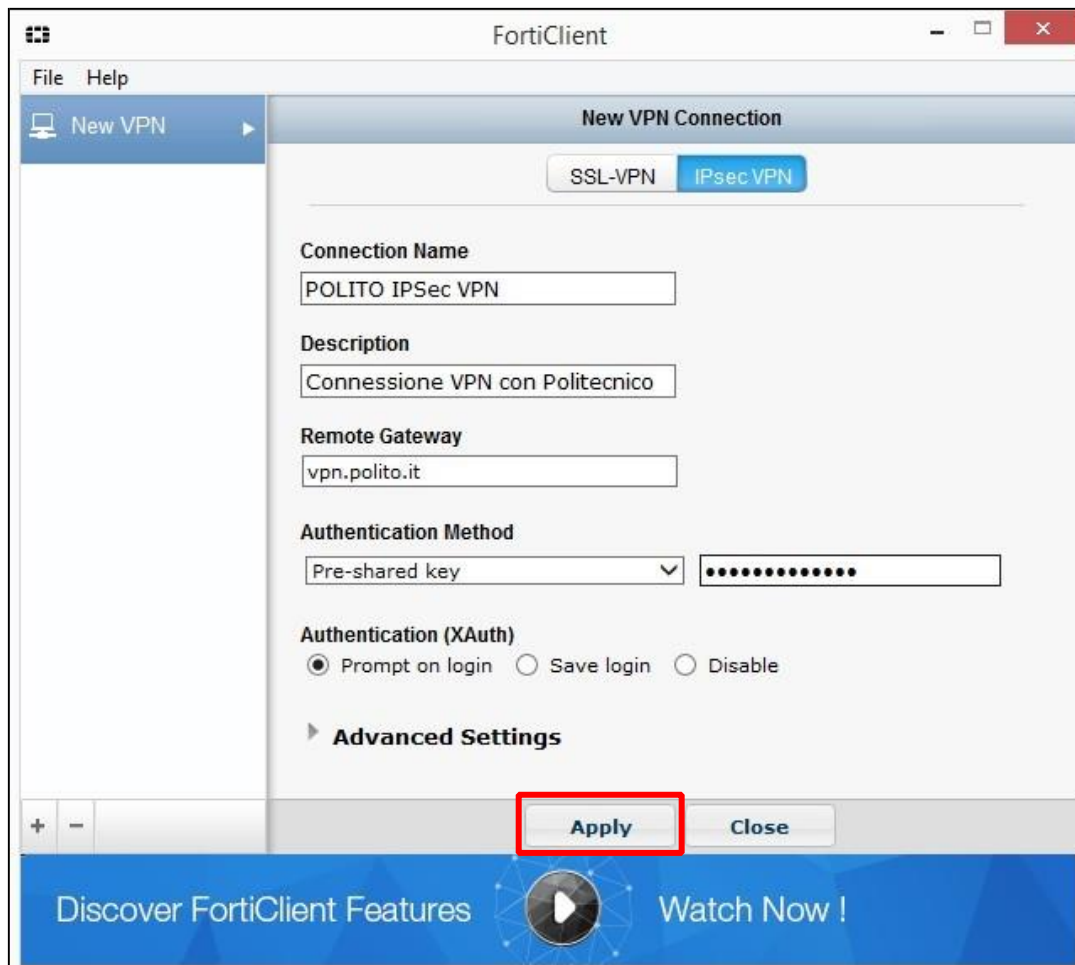
Infrastrutture.areaIT@polito.it www.AreaIT.polito.it

4. Fill the required fields with the following settings.

- **Connection Name:** POLITO IPsec VPN
- **Description:** Connessione VPN con Politecnico
- **Remote Gateway:** vpn.polito.it
- **Authentication Method:** Pre-shared key

In the blank space, write the key: **personale-vpn**

Refer to the following figure. When the fields are filled, save the settings by clicking on “Apply” and then on “Close”.



4. VPN TUNNEL ACTIVATION

1. After the configuration of the connection, the following screen will be displayed. It is necessary to insert the personal authentication details and then click on “Connect”. Dopo aver configurato la connessione, il client presenterà la seguente schermata. È necessario inserire le proprie credenziali negli appositi campi e poi cliccare su “Connect”.

Area Information Technology

Servizio Infrastrutture - Ufficio Reti e Data Center

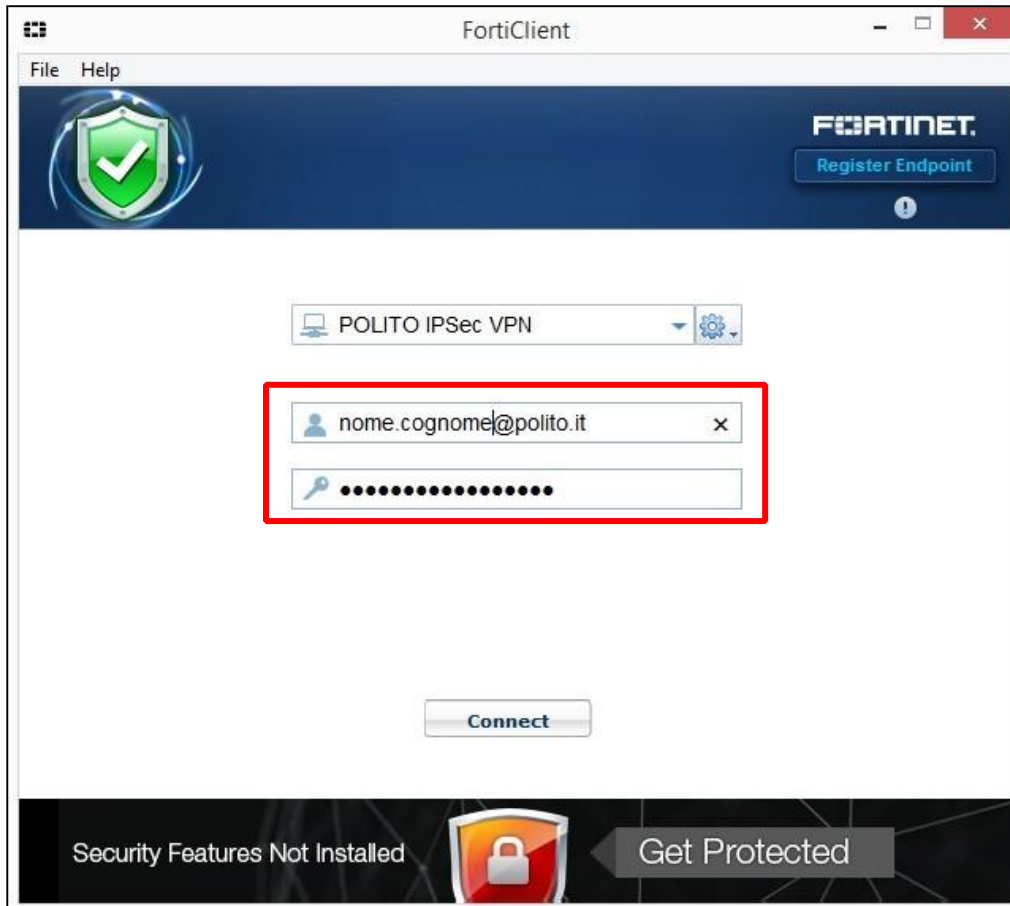
Politecnico di Torino Corso Duca degli Abruzzi, 24 – 10129 Torino – Italia

tel: +39 011.090.6692 fax: +39 011.090.6625

Infrastrutture.areasIT@polito.it www.AreasIT.polito.it



The username for Politecnico employees is ***name.surname@polito.it***



Area Information Technology

Servizio Infrastrutture - Ufficio Reti e Data Center

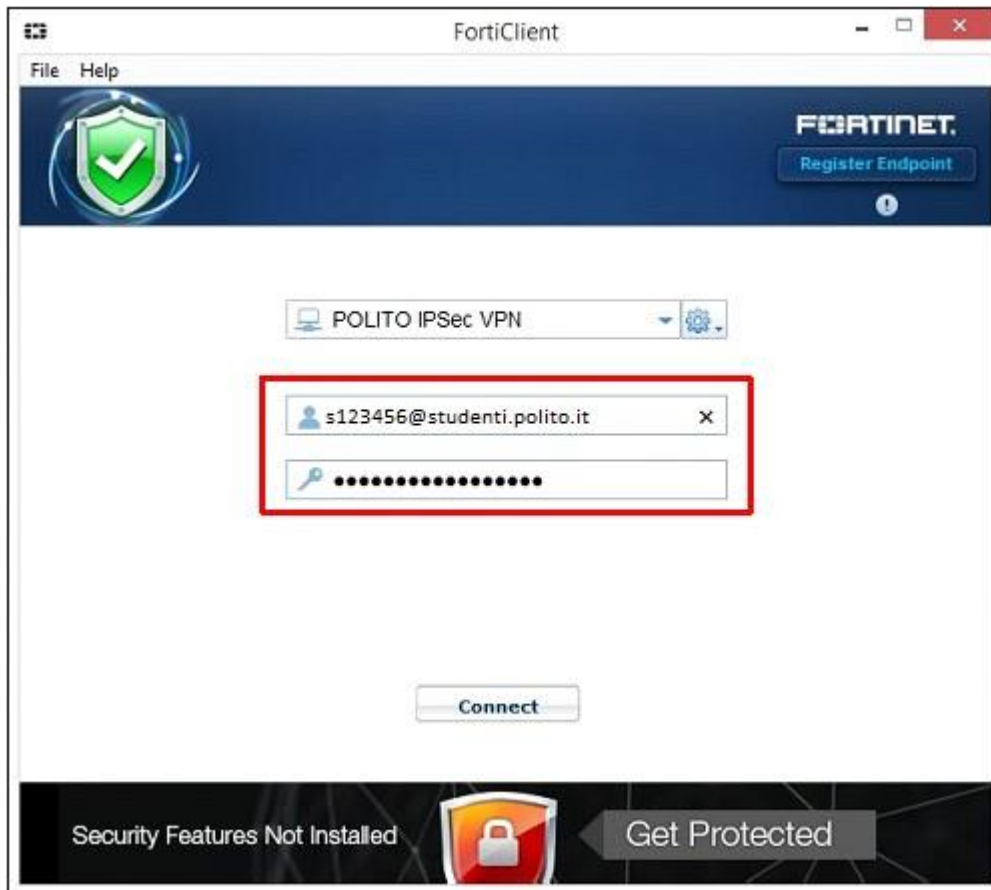
Politecnico di Torino Corso Duca degli Abruzzi, 24 – 10129 Torino – Italia

tel: +39 011.090.6692 fax: +39 011.090.6625

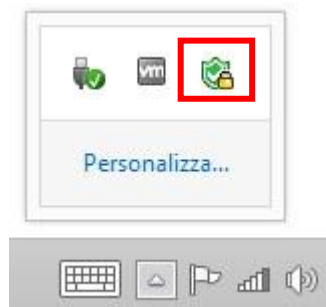
Infrastrutture.areaIT@polito.it www.AreaIT.polito.it

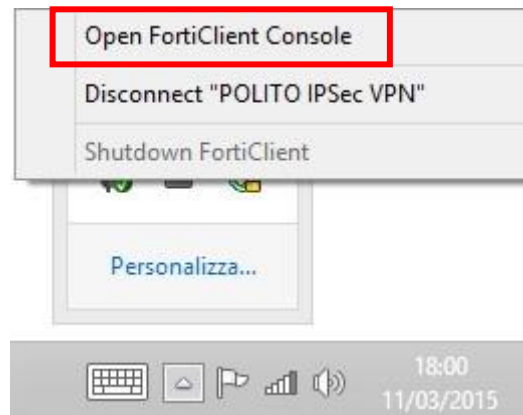


The username for Politecnico students is **sXXXXXX@studenti.polito.it**, where XXXXXX is the 6-digit ID number.



2. It is possible to check the state of the client by inspecting the System Tray, by right-clicking on the FortiClient icon and choosing "Open FortiClient Console".





3. The software provides information about the duration of the VPN session and the in/out traffic through it.



5. AUTHENTICATION CREDENTIALS

The authentication details (username and password) of the VPN service are the same of all the other Politecnico services managed by the IT Department: Portale SWAS-Mypoli, WiFi, Eduroam, institutional e-mail, Portale della Didattica, Windows computers in the University infrastructure.

For Politecnico employees, the username format is:

name.surname@polito.it

while for students it is:

sXXXXXX@studenti.polito.it

where XXXXXX should be replaced with the 6-digits ID number.